

METER CALIBRATION

HIGH SPEED LEVEL

LOW SPEED LEVEL

HIGH SPEED HIGH FREQ. EQ

UP NAB DOWN CCIR

LOW SPEED HIGH FREQ. EQ

HEAD COMPENSATION (BOTH SPEEDS)

HIGH SPEED BIAS

LOW SPEED BIAS



audio systems, ltd

55 circular avenue namden connecticut 06514 u.s.a

TOLERANCES
UNLESS SPECIFIED

FRACTION ±.010

DECIMAL ±.005

ANGLE ± 1/2°

MATERIAL

SHEET

OF

USED IN

DR. A.M.

DATE 7/19/78

STUDER 15/30

CH.

DATE

NAME

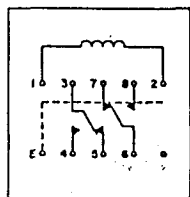
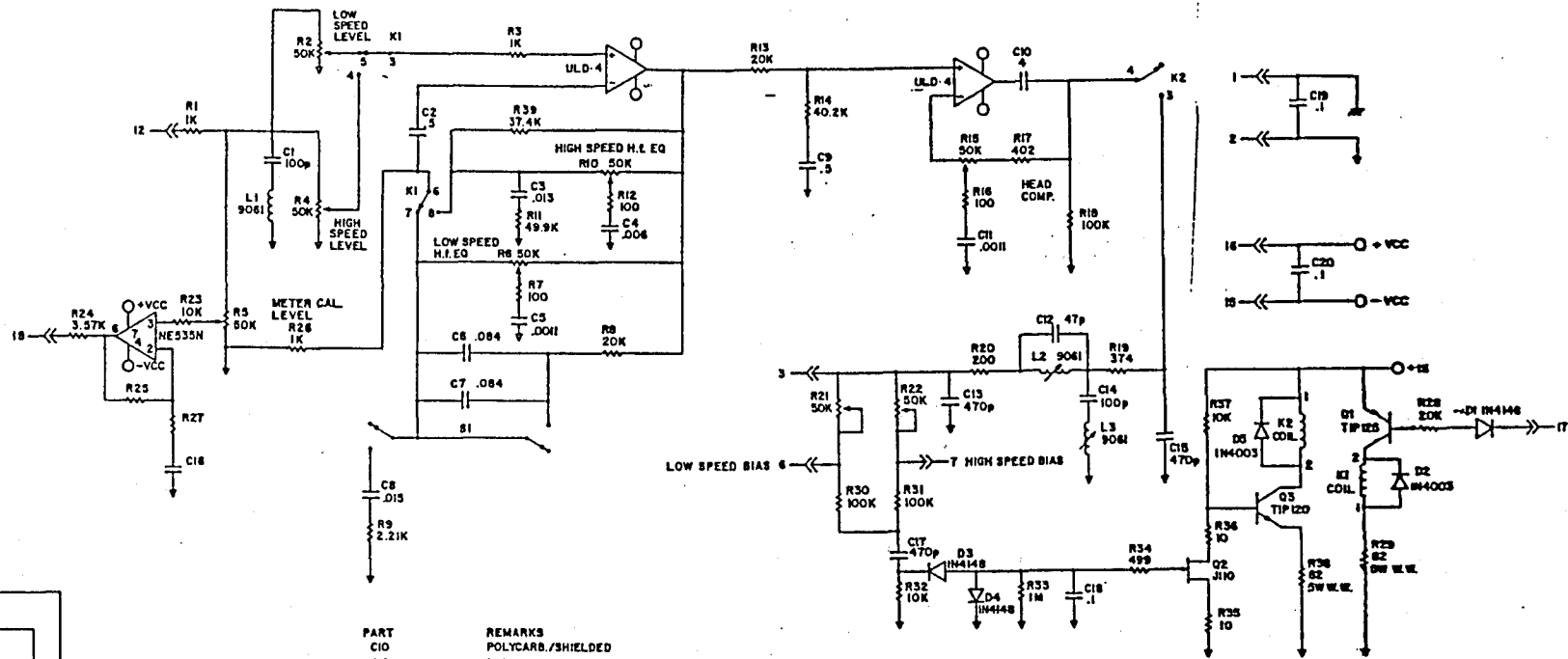
NO.

REVISION

DATE

SCALE

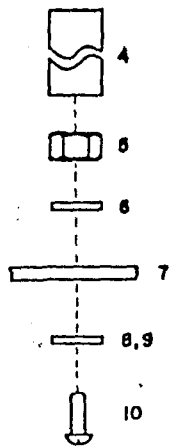
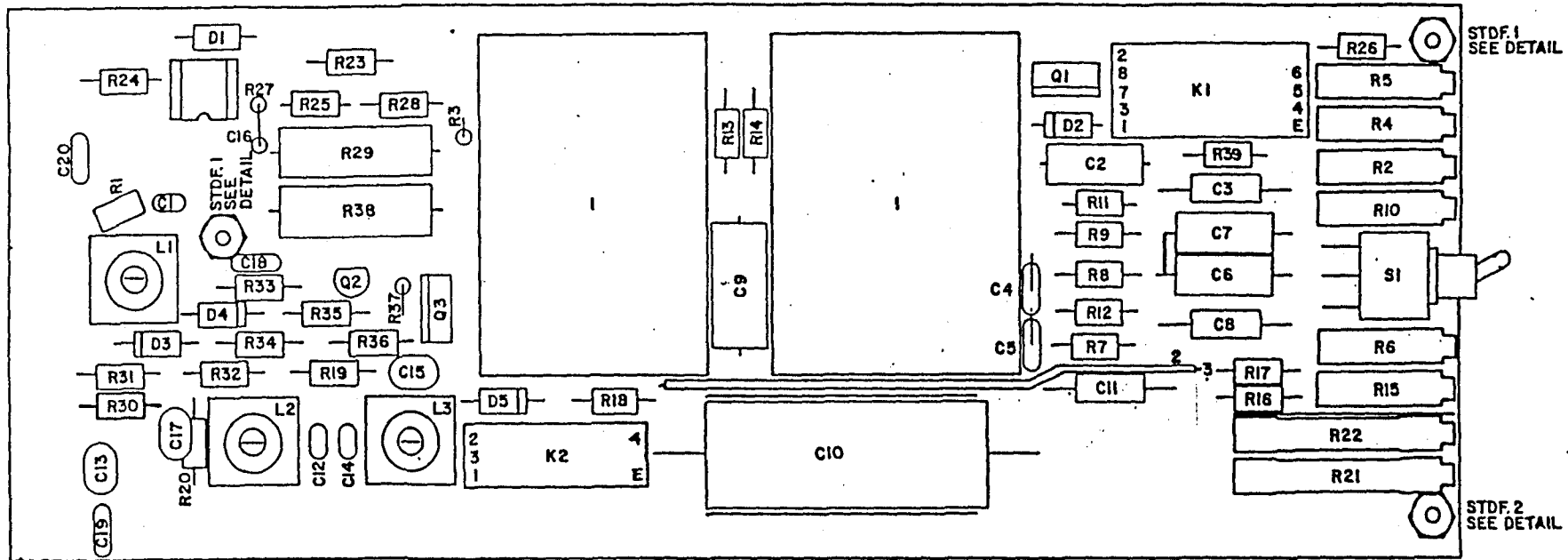
RECORD CARD



RELAY PIN OUT


PART	REMARKS
C10	POLYCARB./SHIELDED
C13	MICA
C15	MICA
C16	NOT COMPLETED FOR OPERATION ON STOCK CARDS.
R25	.
R27	.

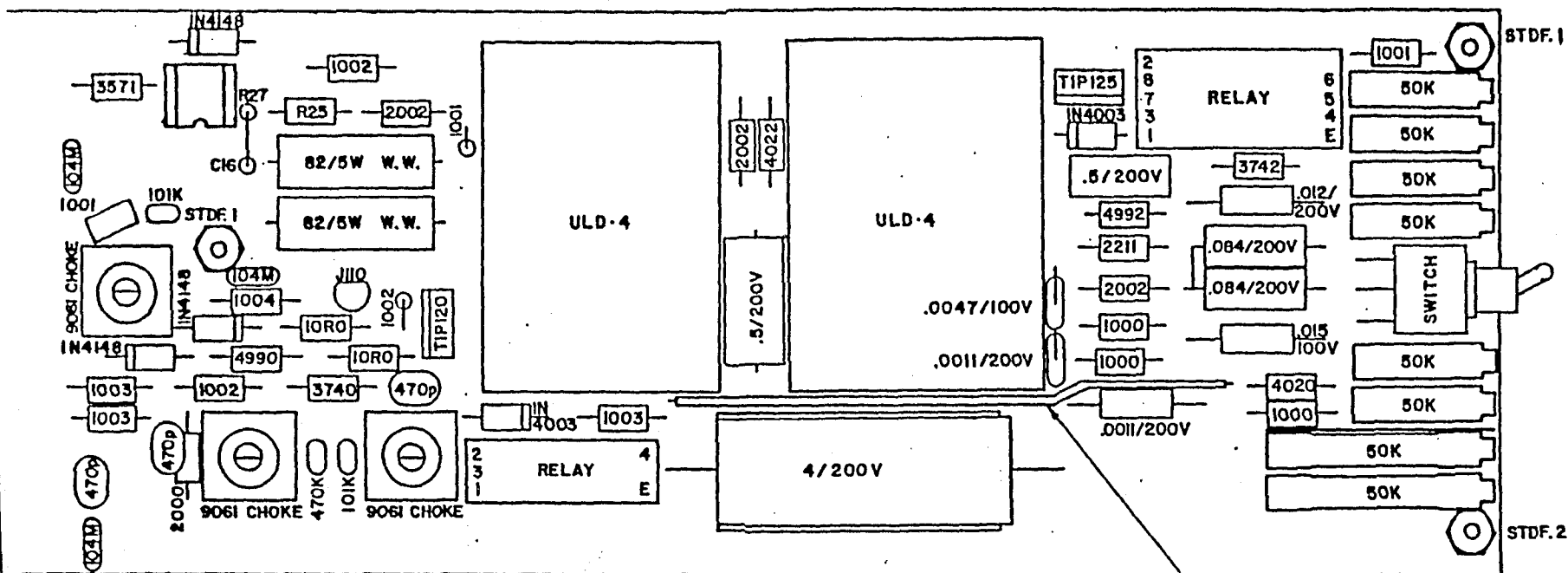
VALUE RESISTOR 1.000 CAPACITOR 1.000 INDUCTOR 1.000 WIRE 1.000		DATE TIME ML-8 151K		RECORD CARD 15/30	
--	--	------------------------------	--	-------------------	--



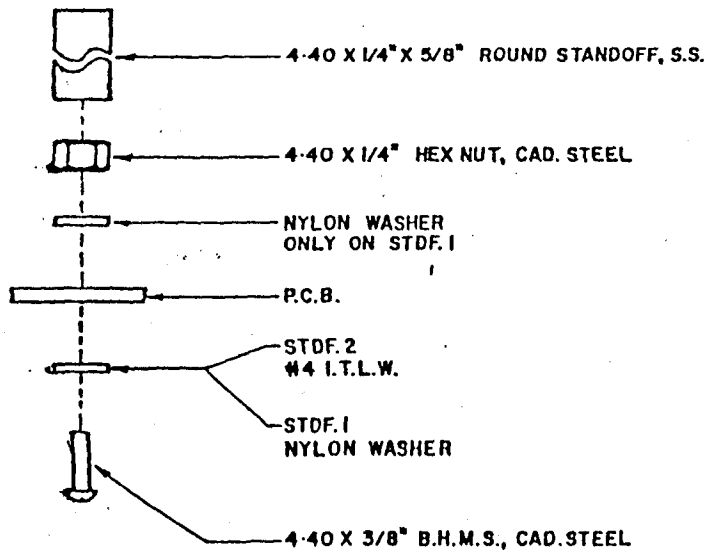
NOTE:

I R25, R27, C16 NOT COMPLETED FOR OPERATION ON STOCK CARDS.

		TOLERANCES UNLESS SPECIFIED		 radio systems, inc.		SHEET		OF	
		FRACTION 1/10 DECIMAL 2.000 ANGLE 1/16°				MATERIAL		A	
		DATE 2-9-53 CHK. DATE		MFG. IN ML-8		C		D	
ISSUE		REVISION		DATE SCALE		NAME		NO.	
				RECORD CARD 15/30					



22 AWG. BUSS WIRE
 * TEFLON TUBING



NOTE:
 1 R25,R27,C16 NOT COMPLETED FOR OPERATION ON STOCK CARDS.

		TOLERANCES UNLESS SPECIFIED		markin evinson® audio systems, ltd	
		FRACTION 1/10			
		DECIMAL 1.008		MATERIAL	
		ANGLE 1/2°		SHEET OF	
		DATE 3-9-63		A B C D E R	
		DATE		ML-5	
REVISION		DATE SCALE		NAME	
				RECORD CARD 15/30	